

RESCUE
ENTIRE RANGE

LUKAS

superior equipment for saving lives



LUKAS saves lives ACROSS THE WORLD

LUKAS has been developing hydraulic rescue tools since 1972. We are present across the world and our range of products can help you save lives. That is why we pay great attention to the quality of our tools. "Made in Germany" manufactured LUKAS rescue tools with a special seal of quality, precision and passion, so you can rely upon our technology when rescuing. We are innovative and are constantly finding ways to develop our rescue tools for you. The tools should be light, comfortable and efficient for use in rescue operations.

This is not difficult for LUKAS, a part of the international IDEX Corporation. Thanks to our IDEX Fire & Safety family, we can act globally, exchange international practical knowledge and place high-performance rescue equipment on the global market.

**We want to save lives with you!
We are a team!**



Superior equipment FOR SAVING LIVES

We were the first manufacturer in the world to develop hydraulic cutters and have over 40 years of experience in manufacturing rescue equipment for global use.

LUKAS rescue equipment is user-friendly, powerful and quick to use. We are a reliable partner whom you can trust. The safety of the rescuers and injured persons is the most important criterion when it comes to developing our equipment.

Our products are intuitive to operate, designed for mobile use and thought out down to the last detail.



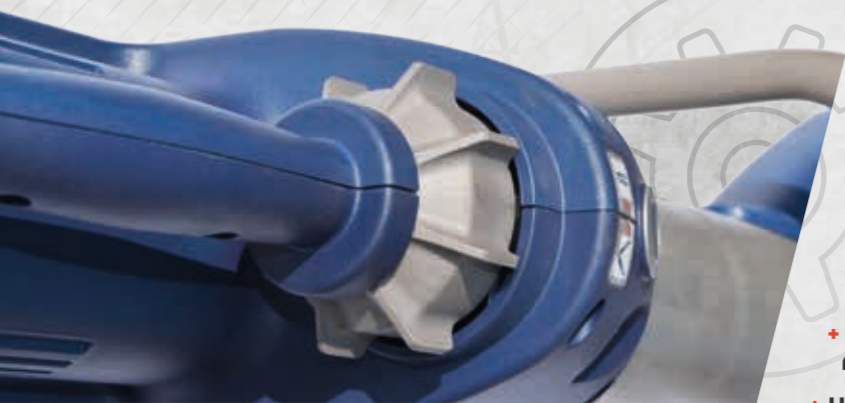
| | |
|------------------------------------|----|
| INNOVATION | 6 |
| eDRAULIC | 8 |
| CUTTERS | 10 |
| SPREADERS | 12 |
| COMBI TOOLS | 14 |
| RESCUE RAMS | 16 |
| STRONGARM | 18 |
| STRONGARM | 20 |
| HOSE-CONNECTED RESCUE TOOLS | 22 |
| CUTTERS | 24 |
| SPREADERS | 25 |
| COMBI TOOLS | 26 |
| TELESCOPIC RESCUE RAMS | 28 |
| RESCUE RAMS | 29 |
| POWER UNITS | 30 |
| POWER UNITS GASOLINE | 32 |
| POWER UNITS ELECTRIC | 33 |
| PORTABLE POWER UNITS | 34 |
| HOSE + HOSE REEL | 35 |
| EQUIPMENT | 36 |
| CUTTER AND DOOR OPENER SETS | 38 |
| BASE MATERIAL | 39 |
| GLASS MANAGEMENT | 40 |
| PROTECTIVE EQUIPMENT | 42 |
| SUPPORT SET | 43 |
| ACCESSORIES | 44 |

LUKAS – INNOVATIVE RESCUE TOOLS



eDRAULIC

- + NO COMPROMISE ON PERFORMANCE FOR HOSE-CONNECTED TOOLS
- + WORK MADE FASTER AND SAFER
- + LESS SPACE REQUIREMENT IN EMERGENCY VEHICLES
- + UNLIMITED OPERATING RADIUS



STAR GRIP

- + PERMITS FINE CONTROL
- + INTUITIVE TO USE FOR LEFT AND RIGHT-HANDERS
- + THE ABILITY TO WORK PRECISELY KEEPS RESCUERS AND PATIENTS SAFE
- + FOR RESCUERS, WORK IS LESS STRENUOUS AND STRESSFUL
- + HANDLE AND CONTROL CLEARLY SEPERATED



CUTTER GEOMETRY

- + PULLS PERFECTLY INTO POSITION
- + LONG LASTING, RESHARPENABLE
- + SUITABLE FOR FUTURE GENERATIONS OF VEHICLES

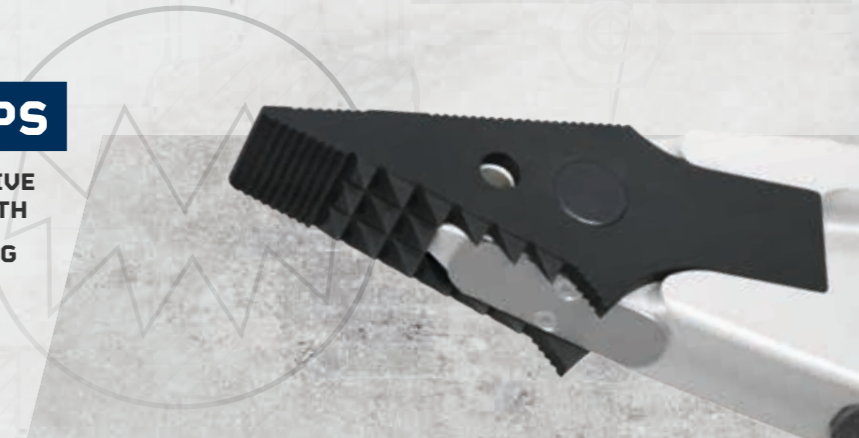
HIGH-PERFORMANCE RESCUE BATTERY

- + SPECIALLY DEVELOPED FOR RESCUE OPERATIONS
- + BATTERY CAN BE CHANGED QUICKLY AND EASILY
- + BATTERY CAN BE CHANGED QUICKLY IN THE DARK THANKS TO AN ILLUMINATED BATTERY COMPARTMENT
- + CHARGING CYCLE COUNTER



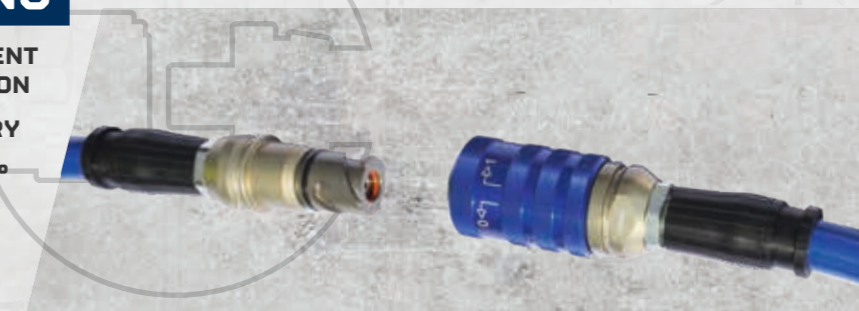
„SHARK TOOTH“ TIPS

- + AGGRESSIVE GRIP THANKS TO INNOVATIVE 3-ROW ARRANGEMENT OF THE STEEL TEETH
- + SPREADING, SQUEEZING AND PULLING



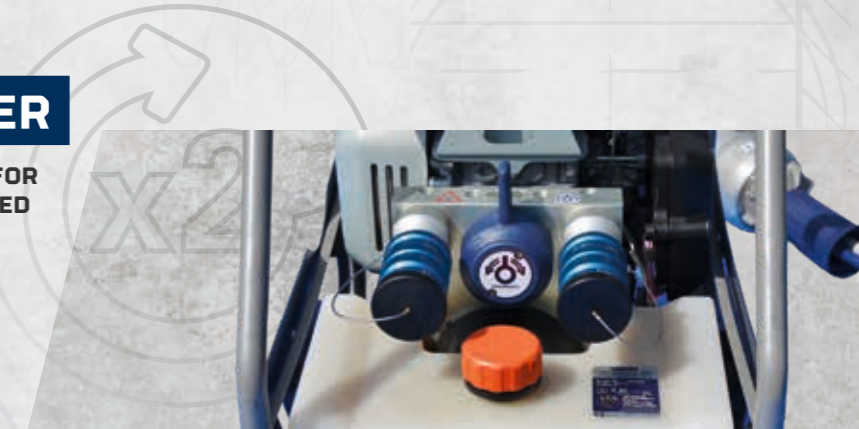
MONO COUPLING

- + FAST CHANGE OF EQUIPMENT DURING OPERATION
- + MANUAL PRESSURE RELIEF IS NOT NECESSARY
- + CAN BE FREELY ROTATED BY 360°
- + HIGHLY RESISTANT TO DIRT



TURBO POWER

- + TWO OIL FLOWS FOR DOUBLE WORKING SPEED



eDRAULIC

**Compact,
more performance –
FASTER TO USE**

LUKAS eDRAULIC technology offers you mobility and flexibility and helps you to rescue people without the need for hose-connected power units. Our eDRAULIC rescue tools allow you to react to any situation quickly. The lack of cumbersome hoses reduces the risk of stumbling at the site of the rescue operation. eDRAULIC rescue tools ensure mobility even on rough terrain and in narrow spaces. They can be easily manoeuvred inside the vehicle, which makes them very flexible.

Our high-performance batteries will not let you down in your rescue operation and save space.

LUKAS was the first manufacturer in the world of electro-hydraulic rescue tools and is very proud of its eDRAULIC technology, which is the technology of the future.



eDRAULIC – CUTTERS

S 788 E2 / S 377 E2 / S 312 E2

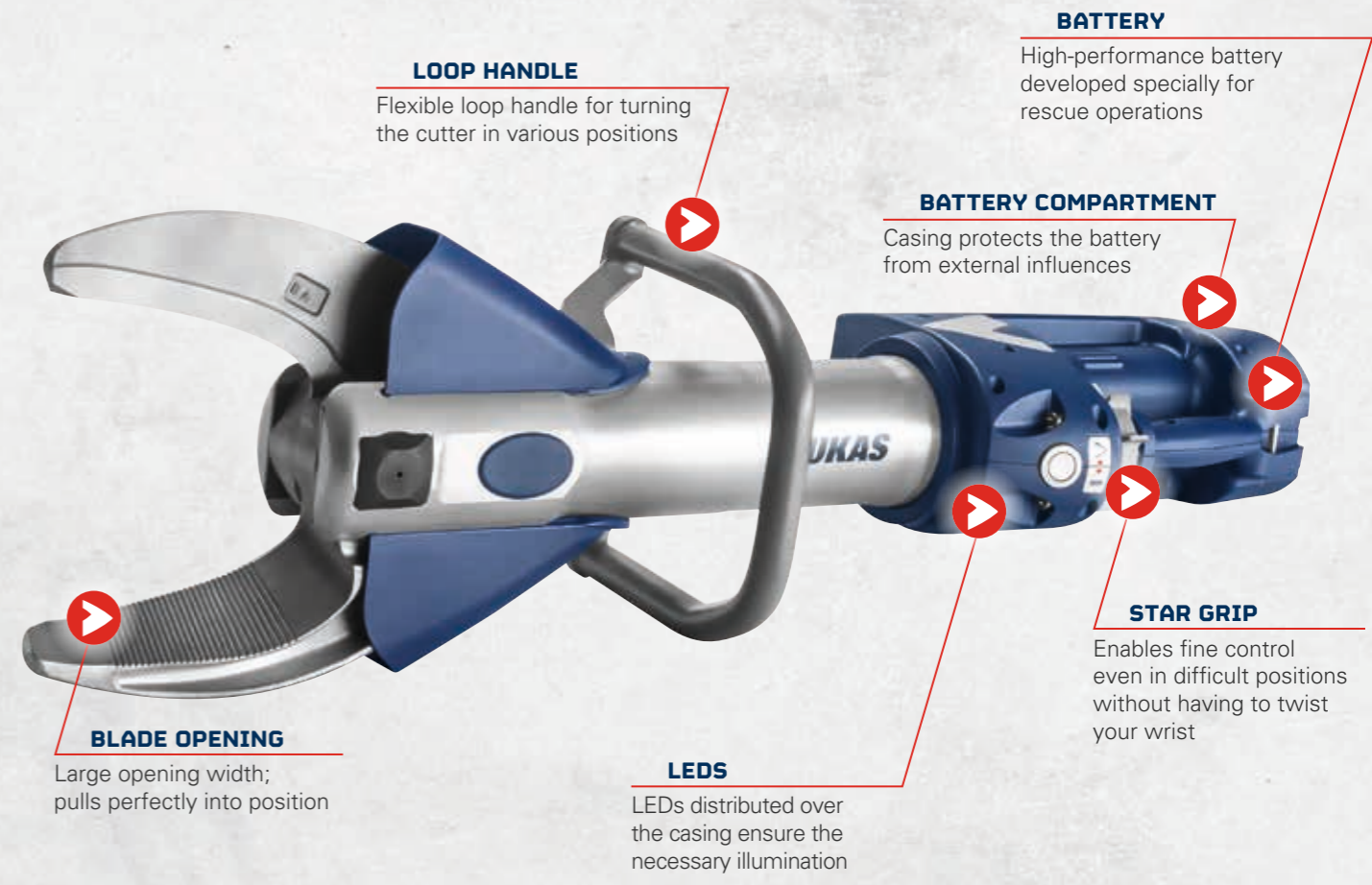


**COMPACT, FLEXIBLE,
POWERFUL**



| | S 788 E2 | S 377 E2 | S 312 E2 |
|-----------------------------------|--|--|---|
| Cutting force up to ¹⁾ | 247,515 lbf. / 1,101 kN | 146,133 lbf. / 650 kN | 152,900 lbf. / 680 kN |
| Round steel up to ø ²⁾ | 1.65 in. / 42 mm | 1.30 in. / 33 mm | 1.38 in. / 35 mm |
| Blade opening | 7.87 in. / 200 mm | 8.11 in. / 206 mm | 6.3 in. / 160 mm |
| Dimensions ³⁾ | 38.9 x 10.5 x 11.1 in. 988 x 266 x 281 mm | 36.8 x 9.33 x 11.1 in. 934 x 237 x 281 mm | 35.6 x 9.3 x 11.1 in. 905 x 237 x 281 mm |
| Weight ⁴⁾ | 50.04 lbs. / 22.7 kg | 42.6 lbs. / 19.3 kg | 40.8 lbs. / 18.5 kg |
| NFPA classes | A8/B9/C8/D9/E9 | A7/B8/C7/B7/E8 | A7/B8/C7/D7/E7 |
| EN cutting class | K | I | I |
| EN cutting performance | 1K – 2K – 3K – 4K – 5K | 1I – 2J – 3I – 4J – 5J | 1I – 2I – 3I – 4J – 5J |
| Protection class | IP 54 | IP 54 | IP 54 |

¹⁾ theoretic ²⁾ according to EN 13204; NFPA 1936 ³⁾ l x w x h ⁴⁾ weight closed; w/o battery



eDRAULIC – SPREADERS

SP 777 E2 / SP 555 E2 / SP 333 E2



SPREADING, SQUEEZING AND PULLING – WHEN EVERY SECOND COUNTS

| | SP 777 E2 | SP 555 E2 | SP 333 E2 |
|--------------------------|--|--|--|
| Spreading force | 14,160 – 134,900 lbf. 63 – 600 kN | 11,690 – 147,924 lbf. 52 – 658 kN | 9,442 – 187,940 lbf. 42 – 836 kN |
| Spreading distance | 32.0 in./813 mm | 28.7 in./730 mm | 23.6 in./600 mm |
| Squeezing force up to | 27,400 lbf./122 kN | 25,900 lbf./115 kN | 32,500 lbf./144 kN |
| Pulling force up to | 13,490 lbf./60 kN | 13,039 lbf./58 kN | 12,589 lbf./56 kN |
| Pulling distance | 25.8 in./655 mm | 22.4 in./569 mm | 17.3 in./440 mm |
| Dimensions ¹⁾ | 42.5 x 12.2 x 11.2 in. 1,080 x 309 x 285 mm | 39.4 x 10.4 x 11.0 in. 1,002 x 265 x 280 mm | 35.6 x 10.0 x 11.2 in. 905 x 255 x 285 mm |
| Weight ²⁾ | 52.0 lbs./23.6 kg | 44.1 lbs./20.0 kg | 38.1 lbs./17.3 kg |
| Protection class | IP 54 | IP 54 | IP 54 |

¹⁾ l x w x h ²⁾ closed; w/o battery

FLAT POINTS

Extra-flat points for narrow gap sizes

SHARK-TOOTH TIPS

Shark-tooth tips with aggressive grip for all kinds of operations

FITTING RAILS

Optional universal fitting rails for three additional lights

LOOP HANDLE

Flexible loop handle for turning the spreader in various positions



eDRAULIC – COMBI TOOLS

SC 757 E2 / SC 358 E2 / SC 258 E2



| | SC 757 E2 | SC 358 E2 | SC 258 E2 |
|-------------------------------------|--|---|---|
| Cutting force up to | 198,000 lbf. / 880 kN | 110,600 lbf. / 492 kN | 63,000 lbf. / 280 kN |
| Round steel up to ø ¹⁾ | 1.5 in. / 38 mm | 1.38 in. / 35 mm | 1.02 in. / 26 mm |
| Spreading force up to | 292,000 lbf. / 1,300 kN | 337,230 lbf. / 1,500 kN | 157,000 lbf. / 700 kN |
| Spreading force 25 mm from tips end | 9,220 lbf. / 41 kN | 8,543 lbf. / 38 kN | 7,200 lbf. / 32 kN |
| Spreading distance | 17.7 in. / 450 mm | 14.5 in. / 368 mm | 12.6 in. / 321 mm |
| Pulling force up to | 22,000 lbf. / 98 kN | 13,714 lbf. / 61 kN | 7,640 lbf. / 34 kN |
| Pulling distance | 11.7 in. / 297 mm | 15 in. / 382 mm | 13 in. / 330 mm |
| Dimensions ²⁾ | 40.7 x 11.6 x 11.2 in. 1,033 x 294 x 285 mm | 37.7 x 9.3 x 10.9 in. 956 x 237 x 278 mm | 34.4 x 8.5 x 11.1 in. 874 x 215 x 281 mm |
| Weight ³⁾ | 52.9 lbs / 24.0 kg | 41.4 lbs / 18.8 kg | 32.6 lbs. / 14.9 kg |
| NFPA classes | A8/B9/C8/D9/E9 | A7/B8/C7/D8/E7 | A6/B6/C6/D7/E7 |
| EN cutting class | J | I | F |
| EN cutting performance | 1J – 2K – 3J – 4K – 5K | 1I – 2J – 3I – 4J – 5J | 1G – 2F – 3F – 4F – 5G |
| Protection class | IP 54 | IP 54 | IP 54 |

¹⁾ according to EN 13204; NFPA 1936 ²⁾ l x w x h ³⁾ closed; w/o battery

CUTTING AND SPREADING WITHOUT CHANGING TOOLS

1 SHARK-TOOTH TIPS

Shark-tooth tips with aggressive grip for all kinds of operations

2 CUTTER

Entire cut length thanks to removable "shark-tooth tips"

3 LOOP HANDLE

Flexible loop handle for turning the combi tool in various positions

4 LEDs

LEDs distributed over the casing ensure the necessary illumination

5 STAR GRIP

Enables comfortable control even in difficult positions without having to twist your wrist

6 BATTERY COMPARTMENT

Casing protects the battery from external influences

7 BATTERY

High-performance battery developed specially for rescue operations



Removable "Shark-tooth tips"



eDRAULIC – RESCUE RAMS

R 421 E2 / R 411 E2



R 421 E2

R 411 E2

| | R 421 E2 | R 411 E2 |
|--------------------------|--|--|
| Total lift | 29.5in./750mm | – |
| Piston 1 lift | 15.2in./387mm | 15.2in./387mm |
| Piston 1 lifting force | 28,600lbf./127kN | 28,600lbf./127kN |
| Piston 2 lift | 14.3in./363mm | – |
| Piston 2 lifting force | 13,500lbf./60kN | – |
| Retracted length | 23.5in./597mm | 23.5in./597mm |
| Extended length | 53.0in./1,347mm | 38.7in./984mm |
| Dimensions ¹⁾ | 23.5 × 5.31 × 12.3in. 597 × 135 × 313mm | 23.5 × 5.31 × 12.3in. 597 × 135 × 313mm |
| Weight ²⁾ | 41.9lbs/19.0kg | 37.3lbs/16.9kg |
| Protection class | IP 54 | IP 54 |

¹⁾ l × w × h ²⁾ closed; w/o battery



LARGE LIFT, MINIMAL SIZE

- 360° CLAWS**
Rotatable, sharp claws with extreme grip
- LEDs**
LEDs distributed over the casing ensure the necessary illumination
- PISTON**
2-stage telescopic ram for extra-long stroke
- STAR GRIP**
Enables fine control even in difficult positions without having to twist your wrist
- BATTERY**
High-performance battery developed specially for rescue operations
- VENTILATION**
Air vents for perfect cooling of the equipment
- BATTERY COMPARTMENT**
Casing protects the battery from external influences
- CASING**
360° rotating casing under pressure for better access inside the vehicle



QUICKLY OVERCOME obstacles

Every operation requires real concentration and perfect equipment. To allow you to overcome all obstacles in the way of a fast rescue, LUKAS has developed a universal tool to provide reliable, high-performance support every time you need it. The StrongArm can open doors and gates, cut chains, locks and bars and lift or push away obstacles.

Whether you are spreading, lifting or cutting, the StrongArm can be used flexibly in any rescue scenario.





E 100 / LE 100



| | E 100 | LE 100 |
|--|--|--|
| Cutting force up to | 34,845 lbf. / 155 kN | 34,845 lbf. / 155 kN |
| Round steel up to ¹⁾ | 0.87 in. / 22.2 mm | 0.87 in. / 22.2 mm |
| Blade opening with combi tips | 8.5 in. / 215 mm | 8.5 in. / 215 mm |
| Spreading force | 6,300 – 157,000 lbf 28 – 700 kN | 6,300 – 157,000 lbf 28 – 700 kN |
| Spreading distance with door opener tips | 7.3 in. / 184 mm | 7.3 in. / 184 mm |
| Spreading distance with combi tips | 8.5 in. / 215 mm | 8.5 in. / 215 mm |
| Dimensions with combi tips ²⁾ | 31.3 x 7.7 x 8.3 in. 796 x 195 x 210 mm | 31.3 x 7.7 x 8.3 in. 796 x 195 x 210 mm |
| Weight ³⁾ | 21.6 lbs / 9.8 kg | 21.6 lbs / 9.8 kg |
| NFPA-Classes | A5/B3/C5/D6/E6 | A5/B3/C5/D6/E6 |
| EN cutting performance | 1E – 2D – 3D – 4D – 5D | 1E – 2D – 3D – 4D – 5D |

¹⁾ according to EN 13204; NFPA 1936 ²⁾ l x w x h ³⁾ without battery and tips



MULTI-TOOL WITH INNUMERABLE APPLICATIONS



Opening

Cutting

Spreading

FITTING RAILS

Universal fitting rails for lighting, etc.

BATTERY

High-performance battery developed specially for rescue operations

LOOP HANDLE

Flexible loop handle for turning the StrongArm in various positions

CHANGING ATTACHMENTS

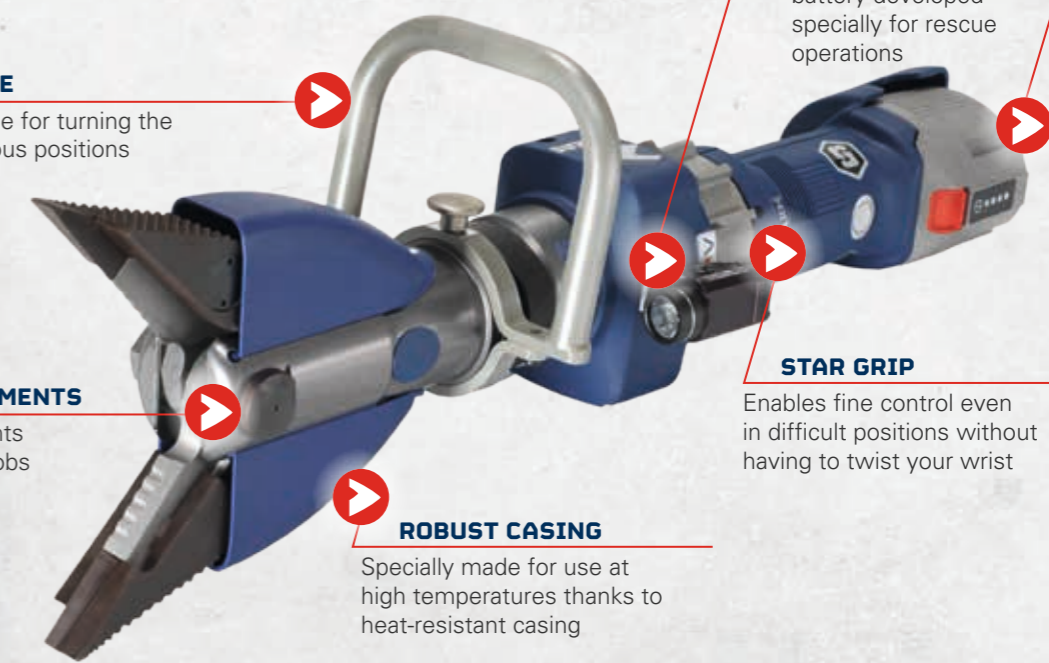
Easy to change attachments thanks to large locking knobs

STAR GRIP

Enables fine control even in difficult positions without having to twist your wrist

ROBUST CASING

Specially made for use at high temperatures thanks to heat-resistant casing



**HOSE-CONNECTED
RESCUE TOOLS**

**RELIABLE,
LONG-LASTING HELPERS**
for any rescue scenario

The classic rescue tool for fire fighters, who have been using hose-connected rescue tools for years. Cutters, spreaders, combi tools and rescue rams have a lot of power because the hose can be connected to several different power units.

LUKAS power units have a turbo function. With one hand movement you can double the oil flow to one tool in order to work twice as fast. Because in rescue operations, every second counts.



CUTTERS

S 788 / S 377 / S 312 / S 120



| | S 788 | S 377 | S 312 | S 120 |
|---|--|--|--|---|
| Cutting force up to ¹⁾ | 247,515 lbf. / 1,101 kN | 146,133 lbf. / 650 kN | 152,900 lbf. / 680 kN | 41,140 lbf. / 183 kN |
| Round steel up to \varnothing ²⁾ | 1.65 in. / 42 mm | 1.30 in. / 33 mm | 1.38 in. / 35 mm | 0.9 in. / 22 mm |
| Blade opening | 7.87 in. / 200 mm | 8.11 in. / 206 mm | 6.3 in. / 160 mm | 2.1 in. / 53 mm |
| Oil requirement | 18 cu. in. / 295 cm ³ | 0.029 gal. / 110 cm ³ | 6.7 cu. in. / 110 cm ³ | 1.04 cu. in. / 17 cm ³ |
| Dimensions ³⁾ | 31.6 x 11.0 x 7.35 in. 801 x 279 x 187 mm | 29.0 x 8.98 x 6.77 in. 736 x 228 x 172 mm | 28.5 x 9.0 x 6.8 in. 724 x 228 x 172 mm | 13.6 x 5.1 x 3.4 in. 346 x 130 x 87 mm |
| Weight | 41.2 lbs. / 18.7 kg | 33.7 lbs. / 15.3 kg | 32.0 lbs. / 14.5 kg | 9.5 lbs. / 4.3 kg |
| NFPA classes | A8/B9/C8/D9/E9 | A7/B8/C7/D7/E8 | A7/B8/C7/D7/E7 | A4/B3/C2/D3/E3 |
| EN classification | CC 200 K-18,7 | BC 180 I-15,3 | BC 160 I-14,5 | AC 53 B-4,3 |
| EN cutting performance | 1K – 2K – 3K – 4K – 5K | 1I – 2J – 3I – 4J – 5J | 1I – 2I – 3I – 4J – 5J | 1D – 2C – 3B |

¹⁾ theoretic ²⁾ according to EN 13204; NFPA 1936 ³⁾ l x w x h

SPREADERS

SP 777 / SP 555 / SP 333



| | SP 777 | SP 555 | SP 333 |
|--------------------------|--|--|--|
| Spreading force | 14,160 – 134,900 lbf. 63 – 600 kN | 11,690 – 147,924 lbf. 52 – 658 kN | 9,442 – 187,940 lbf. 42 – 836 kN |
| Spreading distance | 32.0 in. / 813 mm | 28.7 in. / 730 mm | 23.6 in. / 600 mm |
| Squeezing force up to | 27,400 lbf. / 122 kN | 25,900 lbf. / 115 kN | 32,500 lbf. / 144 kN |
| Pulling force | 13,490 lbf. / 60 kN | 13,039 lbf. / 58 kN | 12,589 lbf. / 56 kN |
| Pulling distance | 25.8 in. / 655 mm | 22.4 in. / 569 mm | 17.3 in. / 440 mm |
| Oil requirement | 23.5 cu. in. / 385 cm ³ | 14.6 cu. in. / 240 cm ³ | 9.15 cu. in. / 150 cm ³ |
| Dimensions ¹⁾ | 35.4 x 12.2 x 7.95 in. 898 x 309 x 202 mm | 32.4 x 11.2 x 7.95 in. 823 x 285 x 202 mm | 28.5 x 11.2 x 7.95 in. 723 x 285 x 202 mm |
| Weight | 43.4 lbs. / 19.7 kg | 35.7 lbs. / 16.2 kg | 29.5 lbs. / 13.4 kg |
| EN classification | BS 63 813-19,7 | AS 52 730-16,2 | AS 42 600-13,4 |

¹⁾ l x w x h

COMBI TOOLS

SC 557 / SC 358 / SC 250 M



| | SC 557 | SC 358 | SC 250 M |
|------------------------|---|--|--|
| Cutting force up to | 182,095 lbf. / 810 kN ¹⁾ | 110,600 lbf. / 492 kN | 58,675 lbf. / 261 kN |
| Round steel up to ø | 1.49 in. / 38 mm ²⁾ | 1.38 in. / 35 mm | 1.02 in. / 26 mm ²⁾ |
| Spreading force | 9,217 – 258,520 lbf. 41 – 1,150 kN | 8,543 lbf. 38 – 1,500 kN ⁴⁾ | 91,052 lbf. / 405 kN |
| Spreading distance | 16.9 in. / 430 mm | 14.5 in. / 368 mm | 12.1 in. / 308 mm |
| Pulling force up to | 20,233 lbf. / 90 kN | 13,714 lbf. / 61 kN ⁵⁾ | 7,194 lbf. / 32 kN |
| Pulling distance | 12.4 in. / 315 mm | 15 in. / 382 mm ⁵⁾ | 13.1 in. / 334 mm |
| Oil requirement | 6.6 cu. in. / 108 cm ³ | 6,7 cu. in. / 110 cm ³ | – |
| Dimensions | 33.1 x 11.6 x 7.5 in. 840 x 295 x 190 mm ³⁾ | 30.5 x 9.0 x 6.8 in. 774 x 228 x 172 mm ³⁾ | 33.5 x 7.48 x 6.22 in. 850 x 190 x 158 mm ³⁾ |
| Weight | 43.7 lbs / 19.8 kg | 32.6 lbs / 14.8 kg ⁶⁾ | 26.2 lbs / 11.9 kg |
| NFPA classes | A8/B9/C8/D9/E9 | A7/B8/C7/D8/E7 | – |
| EN cutting class | CK 41/430 J-19.8 | CK 38/368 I-14.8 | – |
| EN cutting performance | 1J – 2K – 3K – 4K – 5K | 1I – 2J – 3I – 4J – 5J ²⁾ | – |

¹⁾ theoretic ²⁾ according to EN 13204; NFPA 1936 ³⁾ l x w x h ⁴⁾ 25 mm from front end of tips
⁵⁾ with chain set KSV 11 and adapter set ⁶⁾ incl. hydraulic fluid

OUR RESCUE TECHNOLOGY
for you



TELESCOPIC RESCUE RAMS

R 430 / R 424 / R 422 / R 420



| | R 430 | R 424 | R 422 | R 420 |
|--------------------------|---|---|---|---|
| Total lift | 32.3 in./820 mm | 34.5 in./875 mm | 27.8 in./705 mm | 22.6 in./575 mm |
| Lift Piston 1 | 11.6 in./295 mm | 17.5 in./445 mm | 15.7 in./365 mm | 11.6 in./295 mm |
| Lifting force Piston 1 | 60,474 lbf./269 kN | 60,747 lbf./269 kN | 60,747 lbf./269 kN | 60,747 lbf./269 kN |
| Lift Piston 2 | 11 in./280 mm | 16.9 in./430 mm | 13.4 in./340 mm | 11 in./280 mm |
| Lifting force Piston 2 | 30,124 lbf./134 kN | 30,124 lbf./134 kN | 30,124 lbf./134 kN | 30,124 lbf./134 kN |
| Lift Piston 3 | 9.65 in./245 mm | – | – | – |
| Lifting force Piston 3 | 8,768 lbf./39 kN | – | – | – |
| Retracted length | 18.7 in./475 mm | 24.6 in./625 mm | 21.7 in./550 mm | 18.9 in./480 mm |
| Extended length | 51 in./1,295 mm | 59.1 in./1,500 mm | 49.4 in./1,255 mm | 41.5 in./1,055 mm |
| Oil requirement | 130.6 cu. in./2,140 cm ³ | 130.6 cu. in./2,140 cm ³ | 106.2 cu. in./1,740 cm ³ | 86.04 cu. in./1,410 cm ³ |
| Dimensions ¹⁾ | 18.7 x 4.41 x 8.7 in. 475 x 112 x 221 mm | 24.6 x 4.41 x 8.7 in. 625 x 112 x 221 mm | 21.7 x 4.41 x 8.7 in. 550 x 112 x 221 mm | 18.8 x 4.41 x 8.7 in. 480 x 112 x 221 mm |
| Weight | 39 lbs/17.7 kg | 46.3 lbs/21.0 kg | 41.4 lbs/18.8 kg | 37 lbs/16.8 kg |

¹⁾ l x w x h

RESCUE RAMS

R 414 / R 412 / R 410



| | R 414 | R 412 | R 410 |
|--------------------------|---|---|---|
| Piston stroke | 27.6 in./700 mm | 19.7 in./500 mm | 11.8 in./300 mm |
| Lifting force | 27,876 lbf./124 kN | 30,799 lbf./137 kN | 30,799 lbf./137 kN |
| Retracted length | 35.4 in./900 mm | 26.8 in./680 mm | 17.7 in./450 mm |
| Extended length | 63 in./1,600 mm | 46.5 in./1,180 mm | 29.5 in./750 mm |
| Oil requirement | 67.7 cu. in./1,110 cm ³ | 48.5 cu. in./795 cm ³ | 29.1 cu. in./477 cm ³ |
| Dimensions ¹⁾ | 35.4 x 3.74 x 6.85 in. 900 x 95 x 174 mm | 26.8 x 3.74 x 6.85 in. 680 x 95 x 174 mm | 17.7 x 3.74 x 6.85 in. 450 x 95 x 174 mm |
| Weight | 52.9 lbs/24.2 kg | 39.5 lbs/17.7 kg | 28.7 lbs/13.0 kg |

¹⁾ l x w x h

POWER UNITS

Maximum performance
with **TURBO FUNCTION**

LUKAS power units are handy, light and flexible. They come with gasoline or electric engine and have plenty of output; up to two tools can be connected simultaneously. A rescue operation involving work on several cars at the same time can easily be carried out thanks to our power units.

Carry out rescue operations at double the speed and get your rescue moving with the turbo function. The turbo mode will speed up the process when one needs to act fast.

LUKAS power units are compact, intelligent power sources and take the pressure off your back.



POWER UNITS

P 635 SG / P 635 SG DHR 20 / P 635 SG MDHR 20
GASOLINE ENGINE



POWER UNITS

P 635 SE / P 635 SE DHR 20 / P 635 SE MDHR 20
ELECTRIC ENGINE



| | P 635 SG | P 635 SG DHR 20 | P 635 SG MDHR 20 |
|-------------------------------------|--|--|--|
| Engine | 4-stroke/gasoline | 4-stroke/gasoline | 4-stroke/gasoline |
| Connection | 2 tools | 2 tools | 2 tools |
| Operation | 2 tools | 2 tools | 2 tools |
| Turbo-Function | included | included | included |
| Power | 2.2kW | 2.2kW | 2.2kW |
| Operating pressure | 10,000psi/700bar | 10,000psi/700bar | 10,000psi/700bar |
| Flow rate low / high pressure | 2 x 183 – 2 x 42.7 cu. in./min. 2 x 3.0–2 x 0.7 l/min | 2 x 183 – 2 x 42.7 cu. in./min. 2 x 3.0–2 x 0.7 l/min | 2 x 183 – 2 x 42.7 cu. in./min. 2 x 3.0–2 x 0.7 l/min |
| Flow rate turbo low / high pressure | 1 x 353.9 – 1 x 82.4 cu. in./min. 1 x 5.8–1 x 1.35 l/min | 1 x 353.9 – 1 x 82.4 cu. in./min. 1 x 5.8–1 x 1.35 l/min | 1 x 353.9 – 1 x 82.4 cu. in./min. 1 x 5.8–1 x 1.35 l/min |
| Fill quantity hydraulic fluid | 305cu. in./5l | 305cu. in./5l | 305cu. in./5l |
| Dimensions ¹⁾ | 17.3 x 17.3 x 17.5in. 440 x 440 x 445mm | 31.4 x 17.3 x 23.6in. 798 x 440 x 600mm | 32.3 x 17.3 x 23.6in. 820 x 440 x 600mm |
| Weight ²⁾ | 71.7lbs/32.5kg | 159.8lbs/72.5kg | 163.8lbs/74.3kg |
| Hose length | – | 2 x 787in. double hose 2 x 20m double hose | 2 x 787in. mono hose 2 x 20m mono hose |
| Certification | EN 13204, NFPA 1936 | EN 13204, NFPA 1936 | EN 13204, NFPA 1936 |

¹⁾ l x w x h ²⁾ incl. gasoline for 1 h and 4.3l hydraulic oil

| | P 635 SE | P 635 SE DHR 20 | P 635 SE MDHR 20 |
|-------------------------------------|--|--|--|
| Engine | 230V electric motor | 230V electric motor | 230V electric motor |
| Connection | 2 tools | 2 tools | 2 tools |
| Operation | 2 tools | 2 tools | 2 tools |
| Turbo-Function | included | included | included |
| Power | 2.2kW | 2.2kW | 2.2kW |
| Operating pressure | 10,000psi/700bar | 10,000psi/700bar | 10,000psi/700bar |
| Flow rate low / high pressure | 2 x 183 – 2 x 42.7 cu. in./min. 2 x 2.4–2 x 0.55 l/min | 2 x 146.5 – 2 x 33.6 cu. in./min. 2 x 2.4–2 x 0.55 l/min | 2 x 146.5 – 2 x 33.6 cu. in./min. 2 x 2.4–2 x 0.55 l/min |
| Flow rate turbo low / high pressure | 1 x 353.9 – 1 x 82.4 cu. in./min. 1 x 4.7–1 x 1.24 l/min | 1 x 286.8 – 1 x 67.1 cu. in./min. 1 x 4.7–1 x 1.24 l/min | 1 x 286.8 – 1 x 67.1 cu. in./min. 1 x 4.7–1 x 1.24 l/min |
| Fill quantity hydraulic fluid | 305cu. in./5l | 305cu. in./5l | 305cu. in./5l |
| Dimensions ¹⁾ | 17.3 x 17.3 x 17.5in. 440 x 440 x 445mm | 31.4 x 17.3 x 23.6in. 798 x 440 x 600mm | 32.3 x 17.3 x 23.6in. 820 x 440 x 600mm |
| Weight ²⁾ | 80.9lbs/36.7kg | 76.7lbs/76.7kg | 173lbs/78.5kg |
| Hose length | – | 2 x 787in. double hose 2 x 20m double hose | 2 x 787in. mono hose 2 x 20m mono hose |
| Certification | EN 13204, NFPA 1936 | EN 13204, NFPA 1936 | EN 13204, NFPA 1936 |

¹⁾ l x w x h ²⁾ incl. 4.3l hydraulic oil

PORTABLE POWER UNITS

P 630 OG / P 630 SG / P 600 OE



P 630 OG

P 630 SG

P 600 OE

| | P 630 OG | P 630 SG |
|-------------------------------------|---|--|
| Engine | 4-stroke/gasoline | 4-stroke/gasoline |
| Connection | 1 tool | 2 tools |
| Operation | 1 tool | 2 tools |
| Turbo-Function | - | included |
| Power max. | 1.6kW | 2.2kW |
| Operating pressure | 10,000 psi/700 bar | 10,000 psi/700 bar |
| Flow rate low / high pressure | 1 x 195,3 – 1 x 42.7 cu.in./min. 1 x 3.2 – 1 x 0.7l/min | 2 x 183 – 2 x 42 cu. in./min. 2 x 3.0 – 2 x 0.7l/min |
| Flow rate turbo low / high pressure | - | 1 x 354 – 1 x 82 cu. in./ min. 1 x 5.8 – 1 x 1.35l/min |
| Standard oil quantity ¹⁾ | 103.7 cu. in./1.7l | 134.3 cu. in./2.2l |
| Maximum oil quantity ¹⁾ | 183.1 cu. in./3.0l | 183.1 cu. in./3.0l |
| Dimensions ¹⁾ | 16.5 x 12.0 x 16.1 in. 420 x 304 x 408 mm | 19.5 x 14.2 x 17.5 in. 495 x 360 x 445 mm |
| Weight ²⁾ | 35.1 lbs/15.9 kg | 52.7 lbs/23.9 kg |
| Certification | EN 13204; NFPA 1936 | EN 13204; NFPA 1936 |

¹⁾ Fill quantity = useable quantity ²⁾ l x w x h

| | P 600 OE |
|-------------------------------|---|
| Engine | eDRAULIC |
| Connection | 1 tool |
| Operation | 1 tool |
| Operating pressure | 10,000 psi/700 bar |
| Flow rate low / high pressure | 2.4 – 0.45l/min |
| Capacity | 91.6 cu. in./1.5l |
| Usable oil quantity | 73.2 cu. in./1.2l |
| Dimensions ¹⁾ | 18.1 x 7.17 x 10.1 in. 460 x 182 x 257 mm |
| Weight ²⁾ | 18.3 lbs/8.3 kg |

¹⁾ l x w x h ²⁾ weight closed; w/o battery

HOSE AND HOSE REEL

SHR 20 / EXTENSION HOSE PAIR / MONO HOSE



Extension hose pair

Mono hose

SHR 20

| | SHR 20 | EXTENSION HOSE PAIR | MONO HOSE |
|--------|--------------------|--------------------------------|--|
| Length | 1 x 787.4 in./20 m | 196.9 in./393.7 in. 5 m/10 m | 196.9 in./393.7 in./590.6 in. 5 m/10 m/15 m |
| Weight | 38.6 lbs/18 kg | 7.7 lbs/13.2 lbs 3.5 kg/6.0 kg | 7.9 lbs/13.2 lbs/18.5 lbs 3.6 kg/6.0 kg/8.4 kg |



EQUIPMENT

Supporting, cutting,
protecting – you can
rely on LUKAS

ADDITIONAL EQUIPMENT

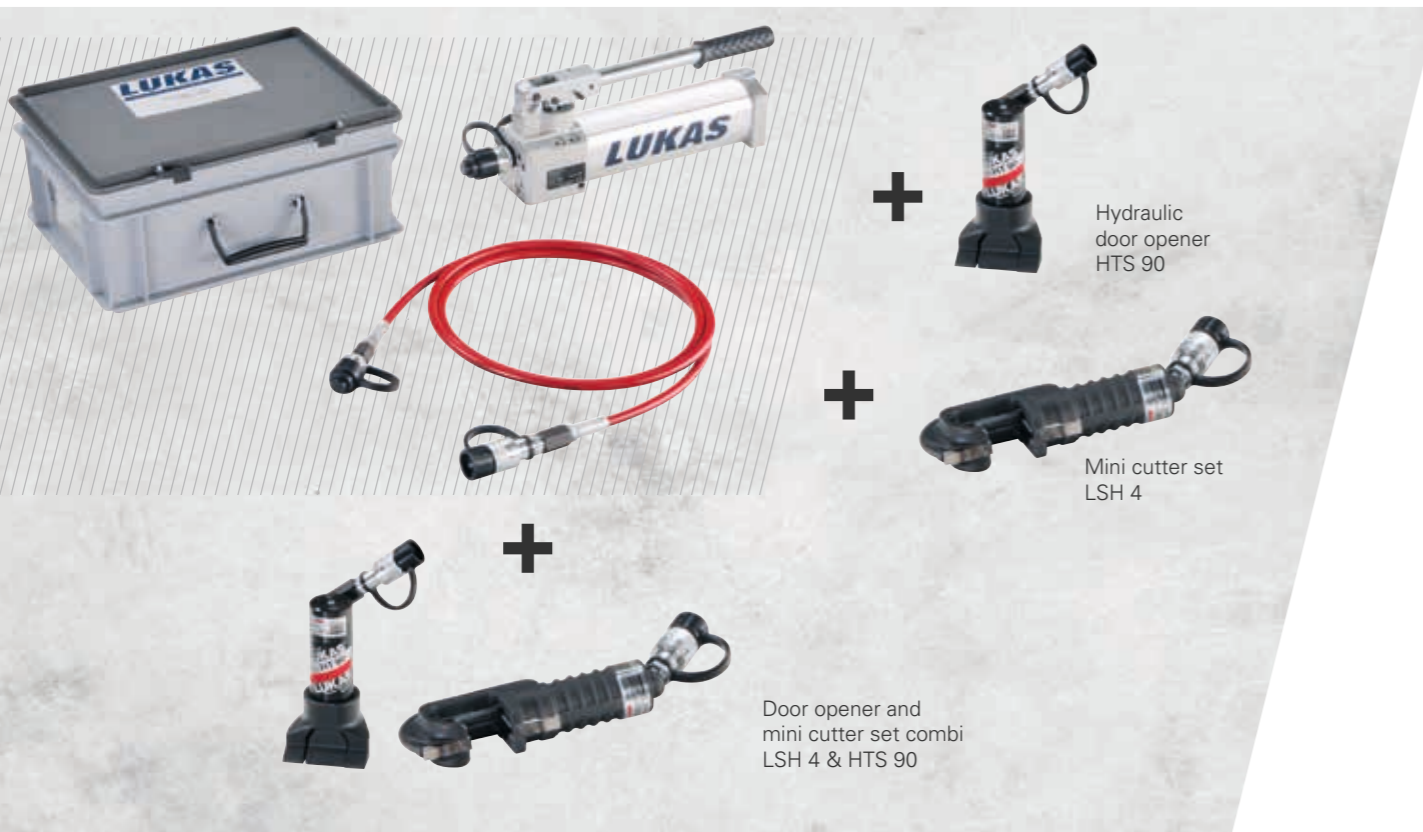
The safety of the people and rescuers during rescue operations is our top priority! We keep this in mind when manufacturing the LUKAS equipment. In order to make your work easier for you at the rescue site, LUKAS offers suitable protective equipment, helpers for glass management and a sophisticated support system in addition to the classic cutter, door opener and lifting sets.

It is often the small helpers that contribute to a successful outcome. We think operations through with you in detail.



CUTTER AND DOOR OPENER SETS

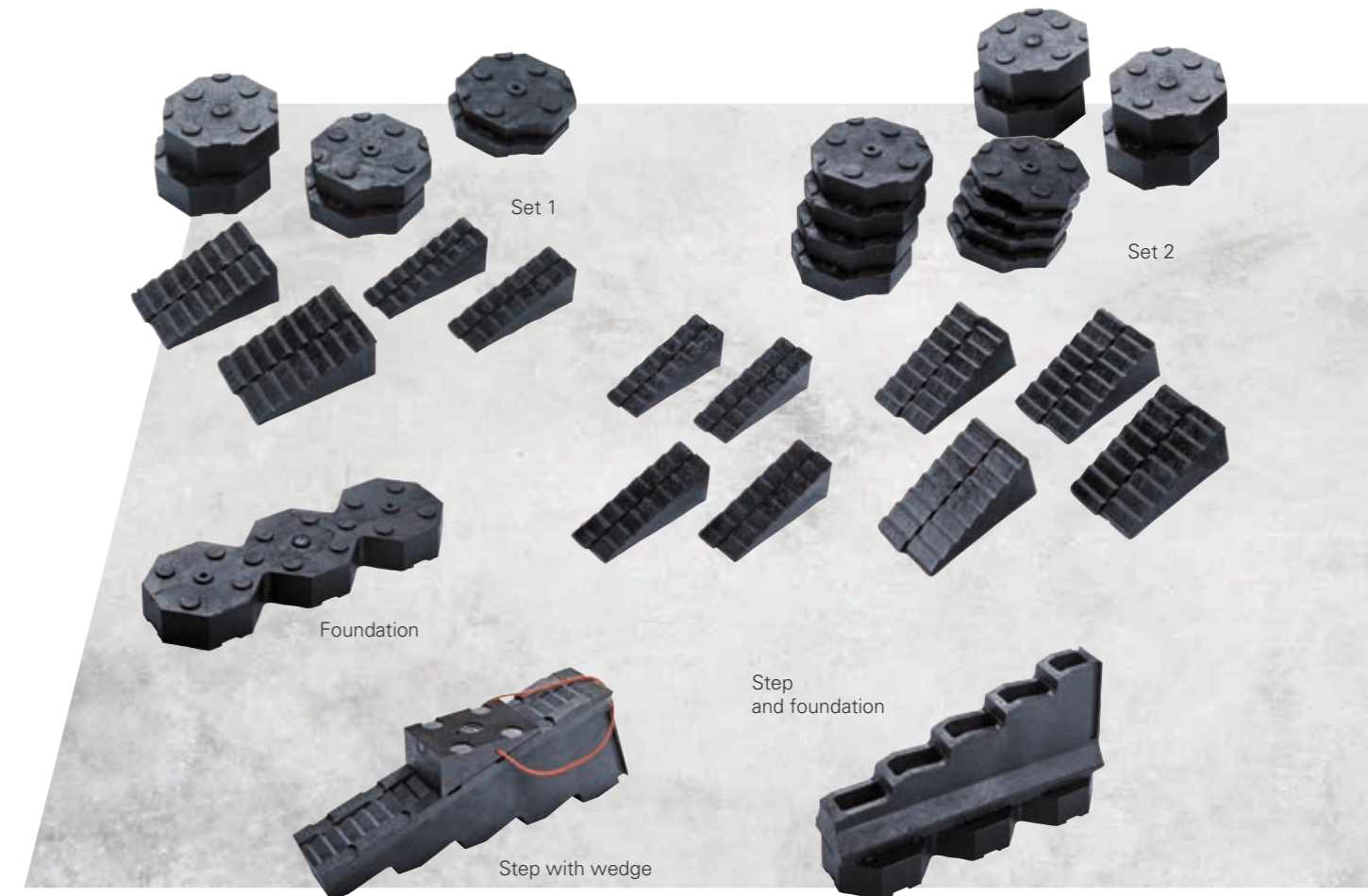
LSH 4 / HTS 90 / COMBI LSH 4 & HTS 90



| | LSH 4 | HTS 90 | LSH 4 & HTS 90 |
|-----------------------|---|---|---|
| Cutting force up to | 16,800 lbf. / 75 kN | – | 16,800 lbf. / 75 kN |
| Spreading force up to | – | 20,000 lbf. / 90 kN | 20,000 lbf. / 90 kN |
| Hub | – | 4 in. / 100 mm | 4 in. / 100 mm |
| Blade opening | 1.6 in. / 40 mm | – | 1.6 in. / 40 mm |
| Set weight | 20 lbs / 8.8 kg | 28 lbs / 12.8 kg | 38 lbs / 17.1 kg |
| Dimensions box | 15.8 x 12.2 x 7.5 in. 400 x 310 x 190 mm | 15.8 x 12.2 x 7.5 in. 400 x 310 x 190 mm | 15.8 x 12.2 x 7.5 in. 400 x 310 x 190 mm |

BASE MATERIAL

SET 1 / SET 2 / FOUNDATION / STEP WITH WEDGE / STEP AND FOUNDATION



GLASS MANAGEMENT

GLASS MANAGEMENT SET / WSC 1 / LES 18 / SPLINTER GUARD



Glass management set

WSC 1

Splinter guard

LES 18 / 8.9kg
445 x 355 x 260 mm

Transport case



PROTECTIVE EQUIPMENT

AIR BAG SAFE SET FOR CARS / PASSENGERS AIR BAG SAFE / PROTECTION COVERS / TOOL STATION



SUPPORT SET

LX-STRUT



LX-STRUT

| | |
|-----------------------|----------------------|
| Min. effective length | 42.1 in./1,070 mm |
| Max. effective length | 72.4 in./1,840 mm |
| Weight | 10.8 lbs/4.9 kg |
| Max. axial load | 3,306.9 lbs/1,500 kg |
| Length strap | 157.5 in./4,000 mm |

ACCESSORIES

eDRAULIC TOOLS



Battery charger

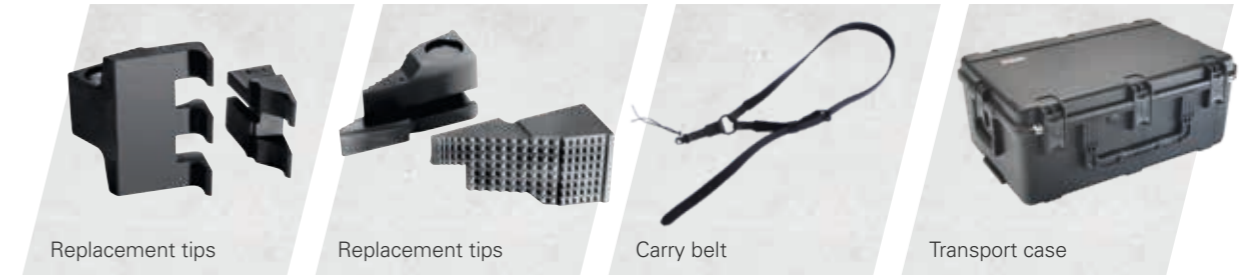
Battery bag for three batteries and one charger

Li-ion battery 24V/5Ah

Power supply 230V or 110V

Carry belt

STRONGARM



Replacement tips

Replacement tips

Carry belt

Transport case

eDRAULIC SPREADER

eDRAULIC RESCUE RAMS



KSV 11

„Shark-Tooth-Tips“

LRS-C / 12.1 kg

LRS-T / 7.7 kg



Backpack harness

Battery

Battery charger

SPREADER

RESCUE RAMS



KSV 11

„Shark Tooth-Tips“

Ram attachment set

ACCESSORIES



LRP rescue platform

Truck cab safety set

COMBI TOOLS



KSV 11, KSV 13

„Shark-Tooth-Tips“

Puller attachment

Transport case and accessories¹⁾
¹⁾1430mm x 415mm x 296mm
 56.3in. x 16.3in. x 11.7in.


Bag with integrated backpack straps



Hand pump LH2/1.8/PN

THE IDEX
FIRE & SAFETY FAMILY
is always there for you!





What do you need for your rescue operations?

Let us know, we'll be glad to advise you.

LUKAS Hydraulik GmbH

A Unit of IDEX Corporation
Weinstraße 39
91058 Erlangen
Germany

Fon: +49 9131 698-0
Fax: +49 9131 698-394
E-Mail: lukas.info@idexcorp.com

www.lukas.com
