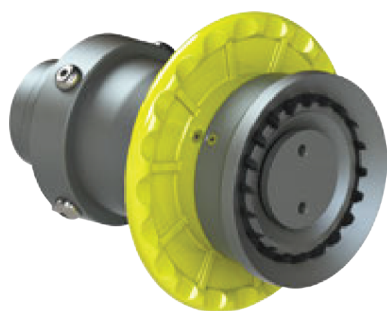
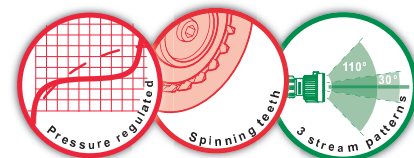


## Tornadomatic



The automatic diffuser Tornadomatic offers a large regulation range. It is made of hard anodised aluminium alloy. The wide angle spray is obtained thanks to spinning teeth. They are designed to be outlet of POK monitor nozzles with 2.5" outlet.

**Maximum working pressure:** PN16  
**Material:** aluminium alloy  
**Surface treatment:** hard anodisation and polyester coating  
**Stream types:** straight jet, flashover and wide angle spray  
**Head:** spinning teeth



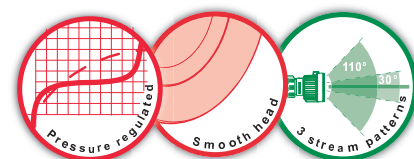
Inlet	Regulated flow rate (lpm)	Working pressure (bar)	Dimensions (mm)	Weight (kg)	Ref.
2.5" BSP male	from 1000 to 3000	7	Ø208 x 254	5,56	<b>29804</b>

## Autokador - smooth head



The automatic diffuser Autokador offers a large regulation range. It is made of hard anodised aluminium alloy. It was designed to be used with POK monitor nozzles to obtain a quality spray and performance for an efficient firefighter.

**Maximum working pressure:** PN16  
**Material:** aluminium alloy  
**Surface treatment:** hard anodisation and polyester coating  
**Stream types:** straight jet, flashover and wide angle spray  
**Head:** smooth



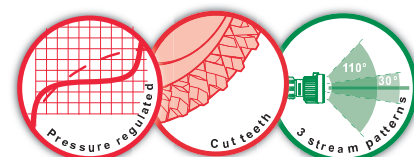
Inlet	Regulated flow rate (lpm)	Working pressure (bar)	Dimensions (mm)	Weight (kg)	Ref.
6" BSP male	from 5000 to 10000	7		26,90	<b>29142</b>
6" NST-NH male	from 5000 to 15000	7		40,00	<b>29437</b>

## Autokador - cut teeth



The automatic diffuser Autokador offers a large regulation range. It is made of hard anodised aluminium alloy. It was designed to be used with POK monitor nozzles to obtain a quality spray and performance for an efficient firefighter.

**Maximum working pressure:** PN16  
**Material:** aluminium alloy  
**Surface treatment:** hard anodisation and polyester coating  
**Stream types:** straight jet, flashover and wide angle spray  
**Head:** cut teeth



Inlet	Regulated flow rate (lpm)	Working pressure (bar)	Dimensions (mm)	Weight (kg)	Ref.
2.5" BSP female	from 1000 to 2000	7	Ø153 x 148	3,25	<b>22505</b>
2.5" BSP male	from 1000 to 3000	7	Ø162 x 260	5,01	<b>29799</b>
2.5" BSP female	from 2000 to 5000	7	Ø218 x 155	4,55	<b>11637</b>
2.5" NST-NH female	from 2000 to 5000	7	Ø218 x 137	3,58	<b>25608</b>
3.5" NST-NH female	from 2000 to 7500	7	Ø274 x 216	10,15	<b>11724</b>
3.5" NST-NH female	from 2000 to 7500	7	Ø324 x 218	11,26	<b>17179</b>